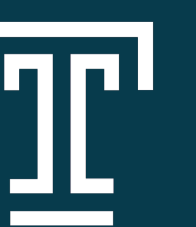


# Master Plan



# Opportunities & Constraints

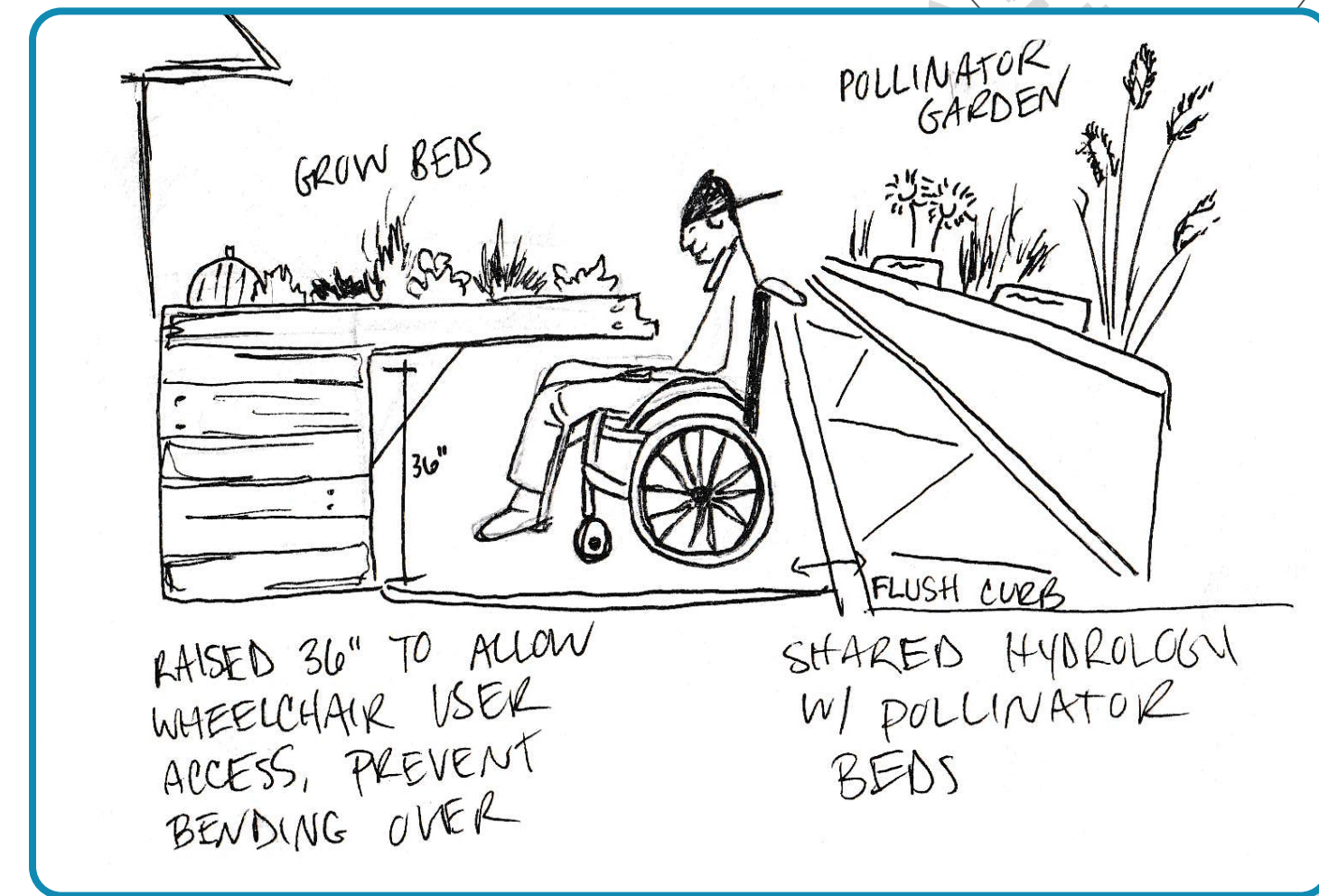
Prominent school nodes, add texture, blue and red pedestrian treatments and clear signage.

Review pedestrian patterns at this transportation node add texture and other safety measures.

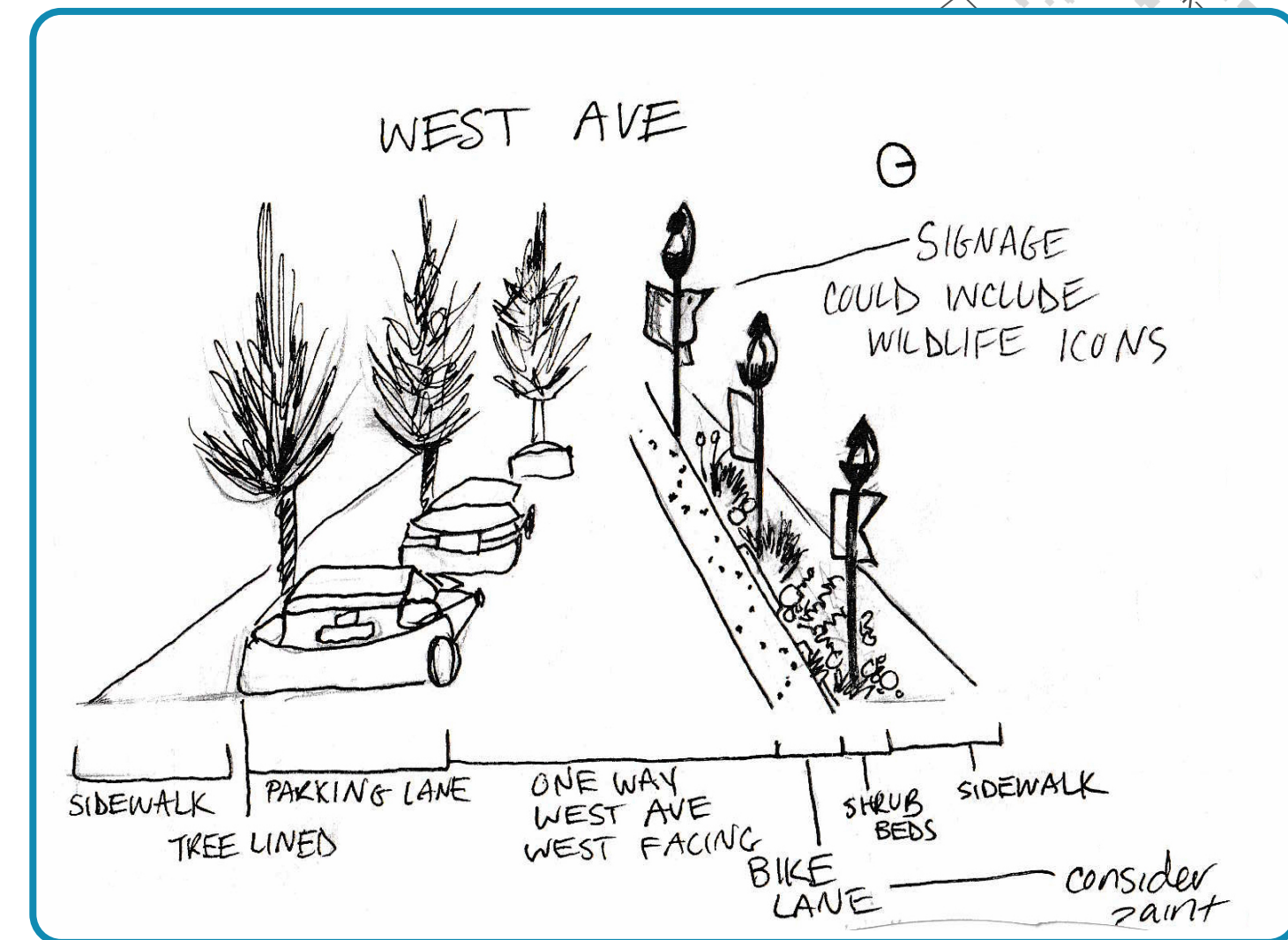
Add texture at intersections to promote vehicle awareness of pedestrian zone.

Under utilized parking.

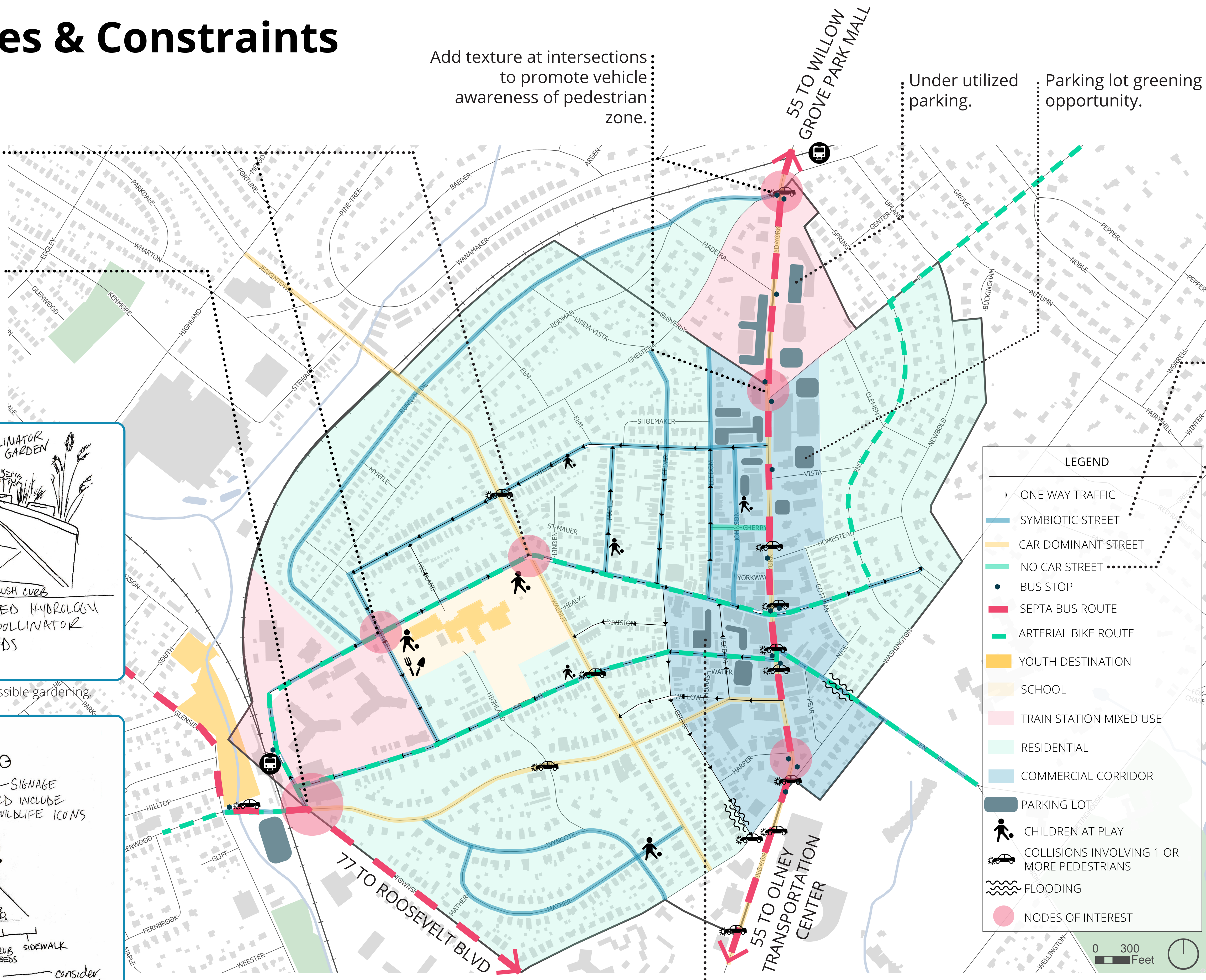
Parking lot greening opportunity.



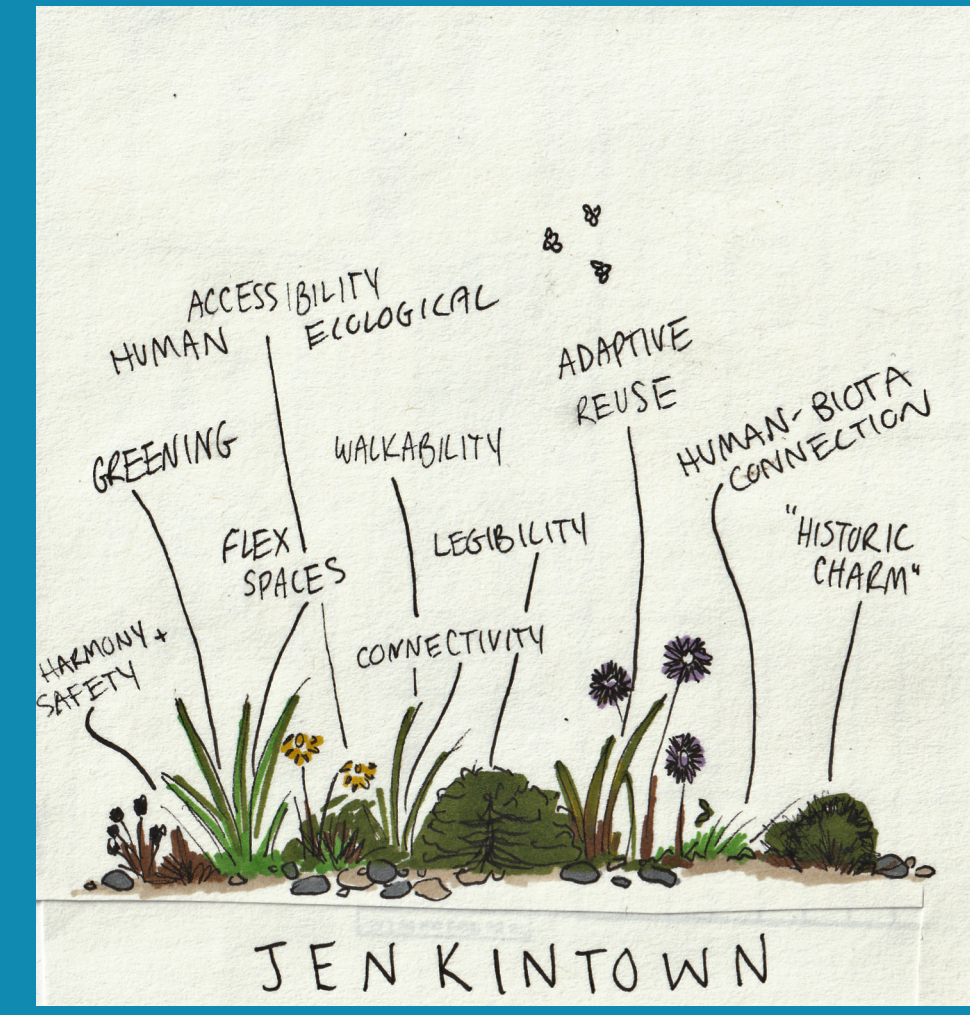
Example of wheel-chair friendly & accessible gardening.



Symbiotic streets will slow vehicle traffic and improved safety features for pedestrians and cyclists while encouraging human-biota connection.



LEGEND	
→	ONE WAY TRAFFIC
—	SYMBIOTIC STREET
—	CAR DOMINANT STREET
—	NO CAR STREET
●	BUS STOP
—	SEPTA BUS ROUTE
—	ARTERIAL BIKE ROUTE
■	YOUTH DESTINATION
■	SCHOOL
■	TRAIN STATION MIXED USE
■	RESIDENTIAL
■	COMMERCIAL CORRIDOR
■	PARKING LOT
👤	CHILDREN AT PLAY
🚗	COLLISIONS INVOLVING 1 OR MORE PEDESTRIANS
🌊	FLOODING
●	NODES OF INTEREST



**SYMBIOTIC STREETS** adapt based on community context. In general they support pedestrians and cyclists, slow traffic, and create ecological corridors and patches.

**NO CAR STREET** puts the street into the hands of people. This space is dedicated to residents and community members who seek to find connection with other humans, plant life, and with other living beings.

## Guiding Principles

All opportunities will be driven with **accessibility** at the forefront of our designs.

Provide opportunities for **human-biota connection** to foster sustainable ecologies.

Cultivate **harmony & safety** between pedestrians, cyclists, vehicle drivers, and wildlife.

Transform **everyday experiences** into **memorable** ones through streets that reflect the culture of the community.

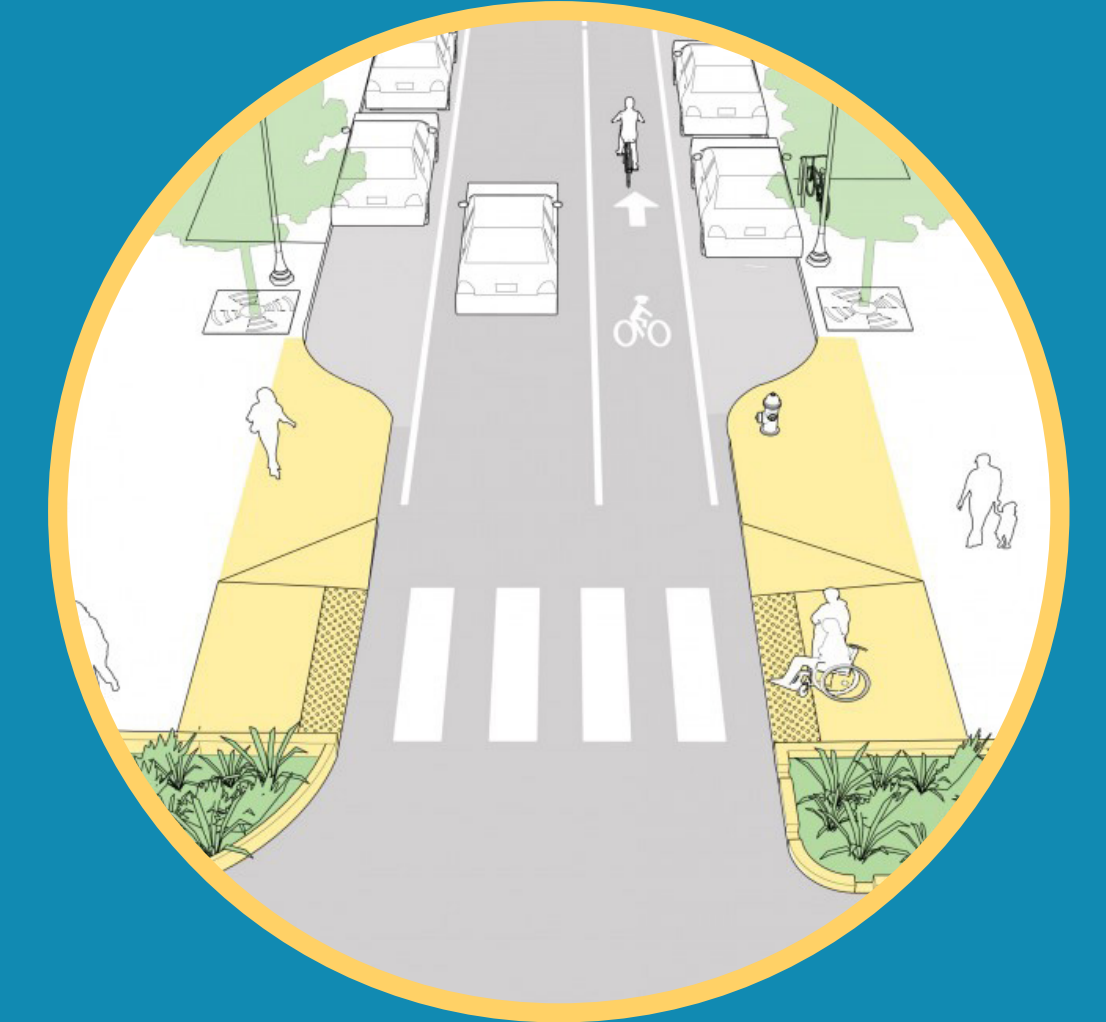
Opportunity for a water feature, de-paving and ecological greening.

# Road Diets & Greening



Examples of Jenkintown's Existing Vegetative Buffers

Road diets and street greening are two methods of **traffic calming**. Road diets involve **de-paving** and reducing the width of car-centric roads while greening introduces more vegetation into the streetscape.



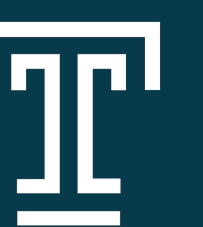
*Vegetated curb bump-outs can help to narrow intersections with overly wide turns.*

**Landscaping elements** and **narrower roadways** result in more alert and cautious drivers. Expanding and planting the vegetative buffer between the road and pedestrians is a simple way to increase **pedestrian comfort** and **safety**.



*Vegetative buffers can also help with stormwater infiltration and biodiversity.*

Some residents have already taken to planting the **vegetative buffers** in front of their homes (pictured at right). Further, there are several overly wide intersections in Jenkintown that would make good candidates for road dieting and street greening.

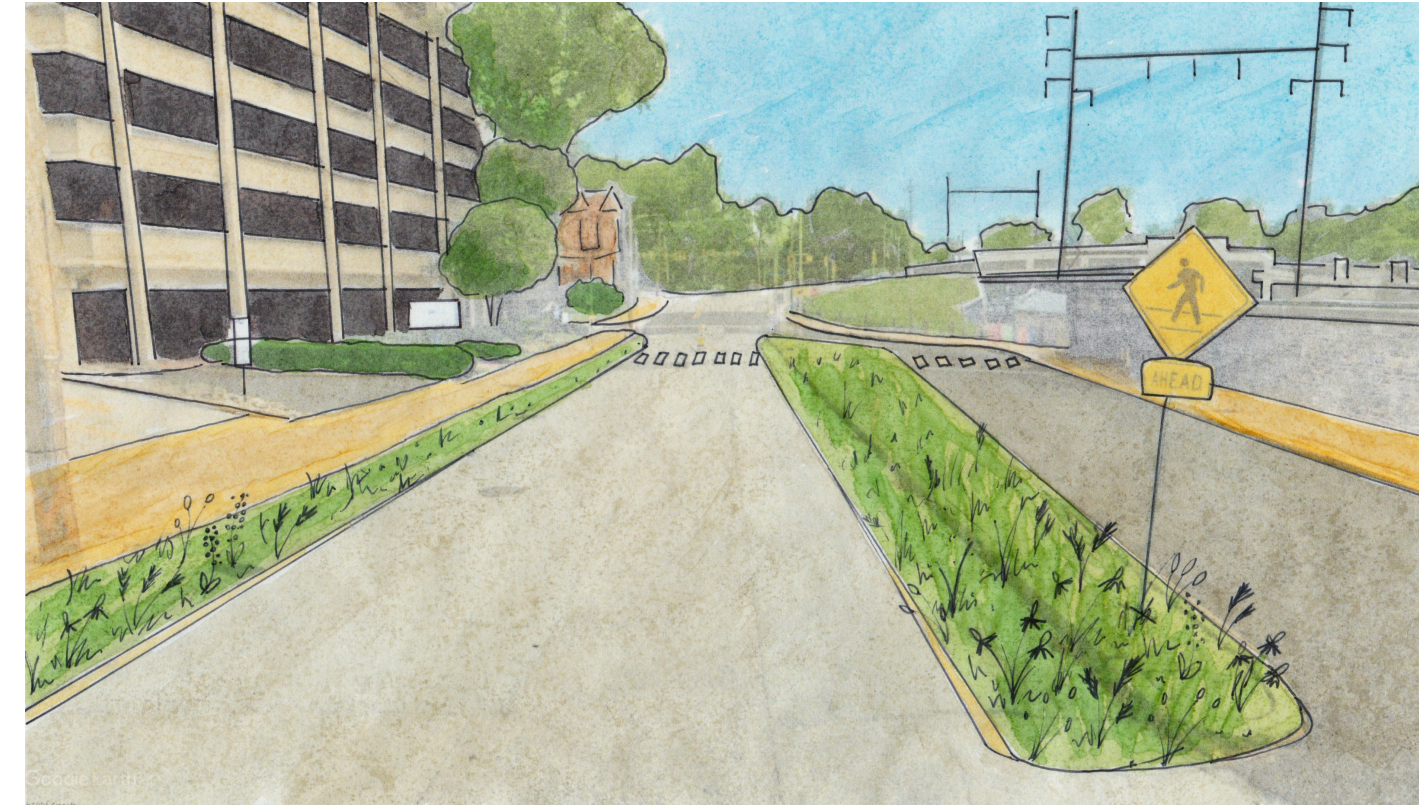


# Road Diet & Greening Opportunities



## ① West Ave. & Jenkintown-Wyncote

- Install vegetated buffer between road & sidewalk
- Expand and vegetate median



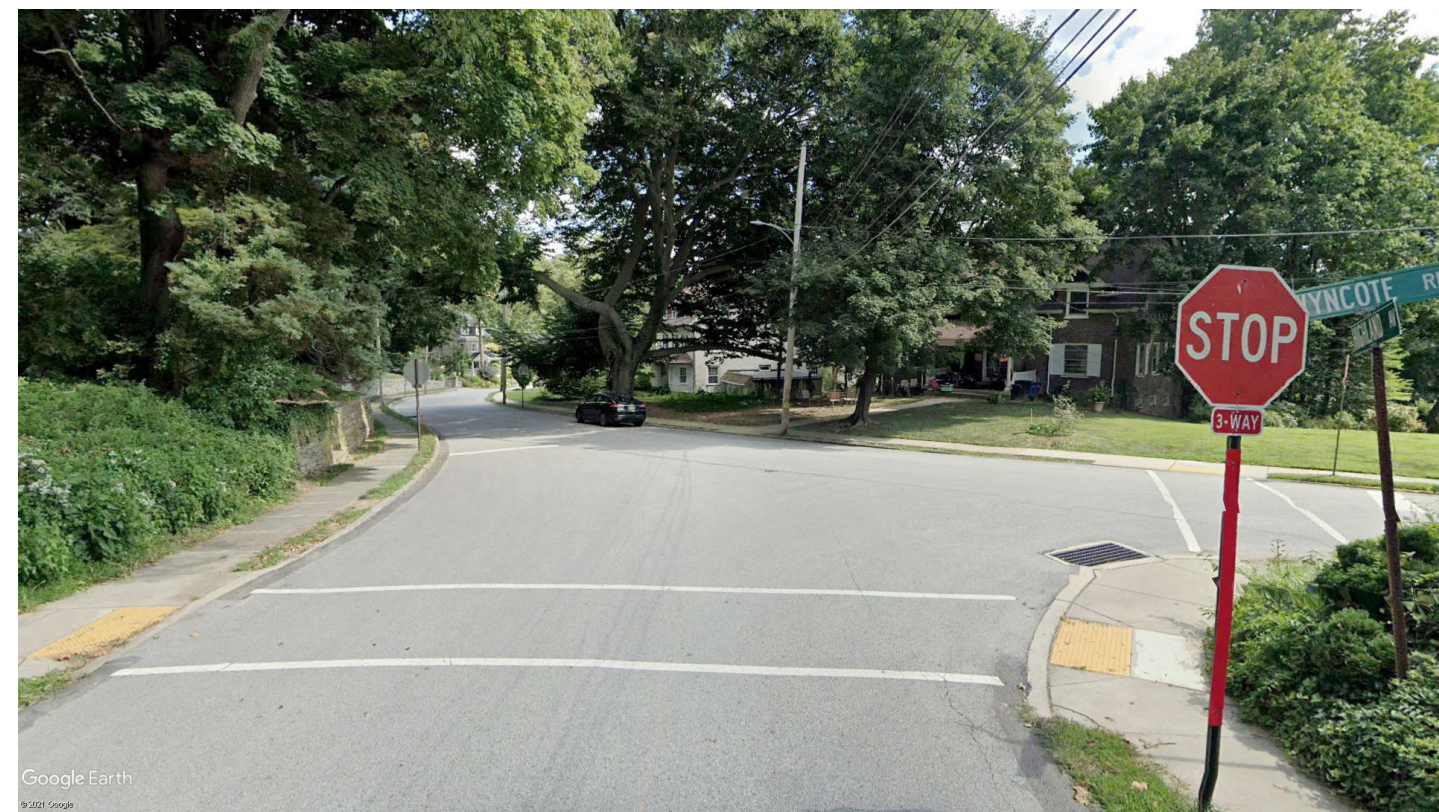
## ② Wyncote Rd. & Summit Ave.

- Expand vegetated buffer between road & sidewalk
- Install vegetated curb bump-out



## ③ Wyncote Rd. & Highland Ave.

- Expand vegetated buffer between road and sidewalk
- Install vegetated curb bump-out



## ④ West Ave. & Newbold Ave.

- Expand vegetated curb bump-outs
- Expand vegetated median



## ⑤ Vista Rd. & Vernon Rd.

- Expand vegetated buffer between road & sidewalk
- Expand and further vegetate traffic island

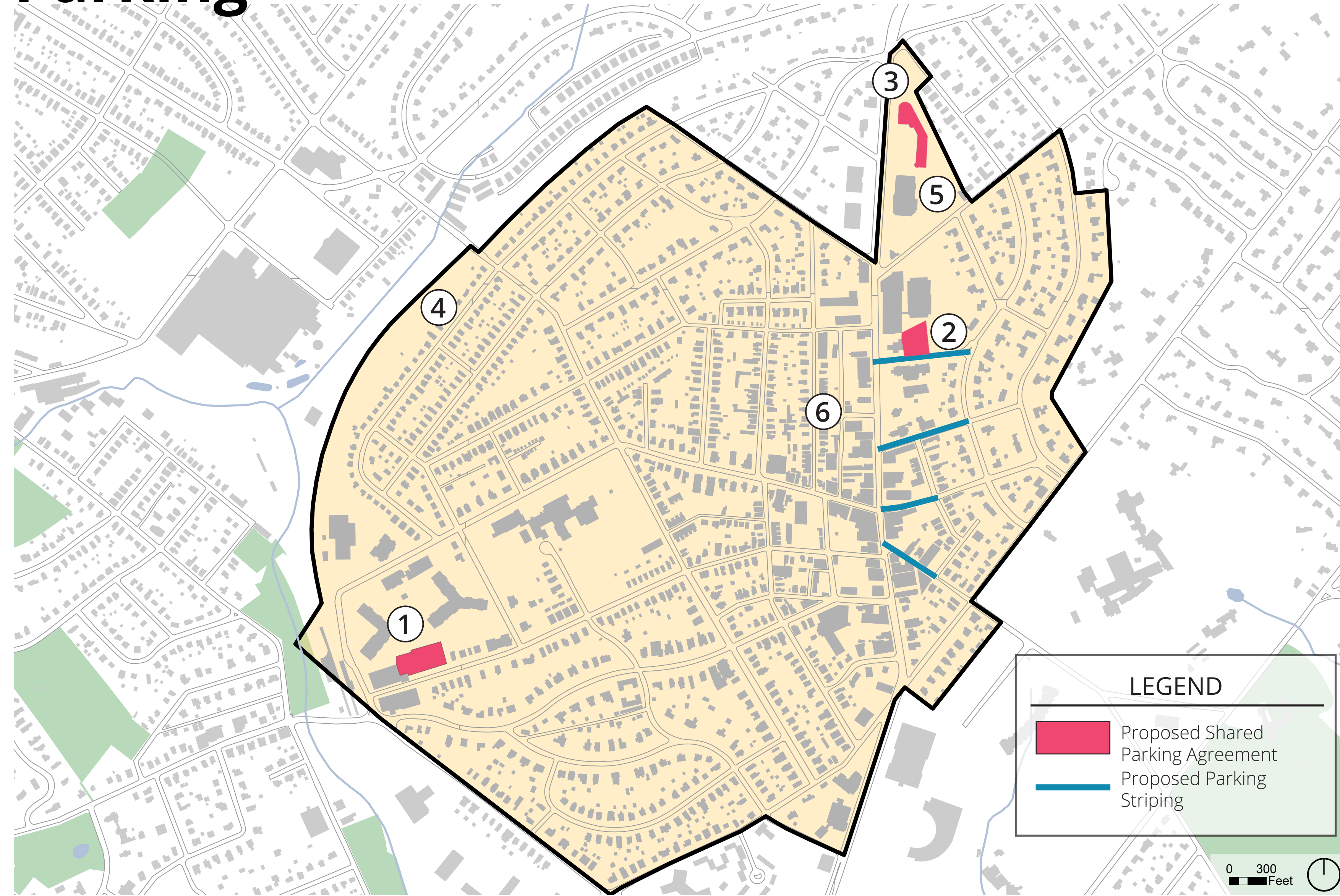


## ⑥ Linda Vista, Cheltena, and Cedar St.

- Install vegetated curb bump-out
- Expand vegetated buffer and plant street trees



# Parking



## Parking Striping



Existing striped parallel parking spots on Johnson Street in commercial corridor



Inefficiencies in parallel parking on unstriped section of Greenwood Ave.

## Shared Parking Agreements



Large private lot attached to "Jenkintown Plaza"



Underutilized library parking lot



Parking garage by Strawbridge's

## Parking Reductions



On-street parking to be removed from residential roads with driveways on both sides



Underutilized surface parking around Strawbridge's



Minimal amount of parking will be removed for no-car Cherry Street block

